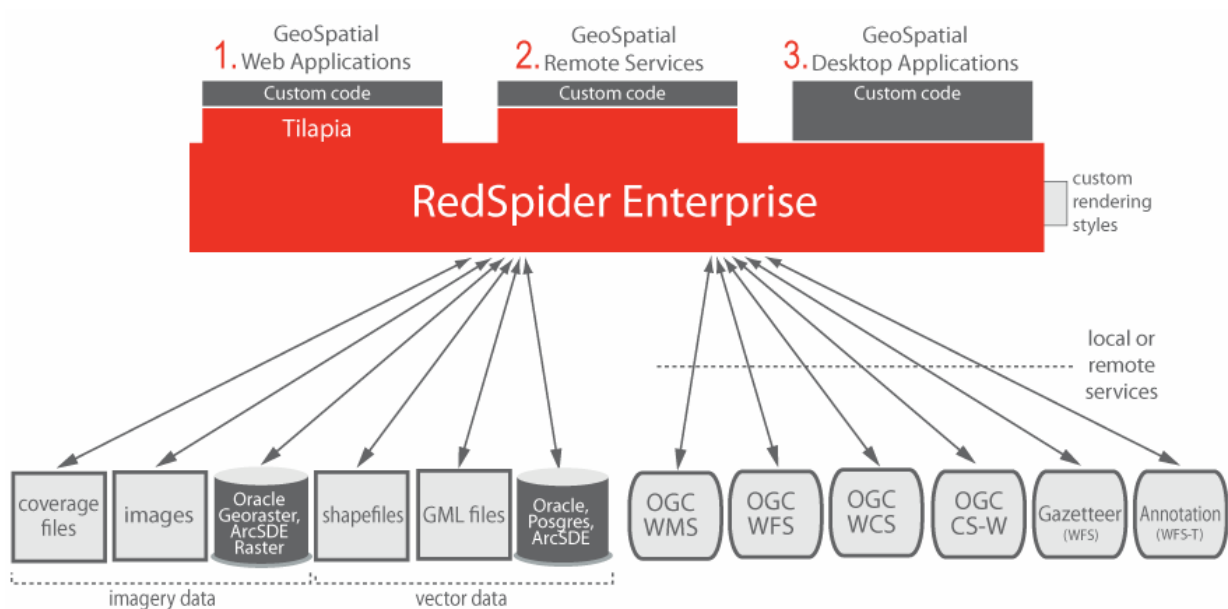




The Enterprise Geospatial Toolkit

3.4.1 final release

Build Custom GeoSpatial Applications



RedSpider Enterprise 3.4.1 is a full enterprise GIS stack that allows to build following types of applications:

1. Geospatial Web Applications

Build rich internet applications (RIA) with the help of the **Tilapia** web toolkit.

2. Geospatial Remote Services

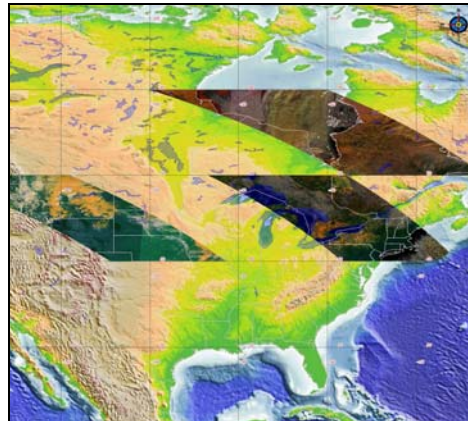
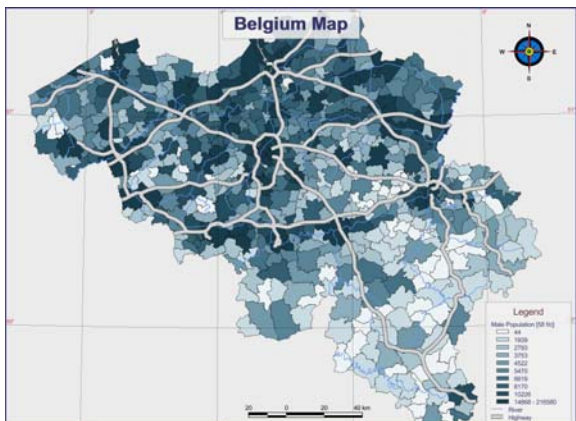
Implement custom remote services and expose them using Java EE, RMI or any desired protocol.

3. Geospatial Desktop Applications

Build Swing/SWT desktop application.

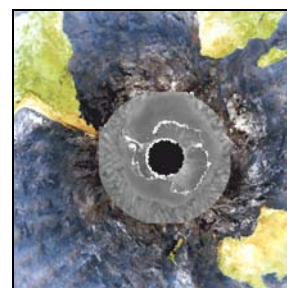
Main **RedSpider Enterprise** features are:

- **OGC services access** in seconds, including:
 - Web Map Services (WMS)
 - Web Feature Services (WFS)
 - Web Coverage Services (WCS)
 - Catalogue Web Services (CS-W)
 - Gazetteer (WFS)
 - Annotation Services (WFS-T)
- Transparent support for multiple **vector and imagery data** formats:
 - GML files (GML2 and GML3)
 - ESRI Shapefiles
 - Oracle, Postgres and ArcSDE
 - Coverage files: Geotiff, DEM, BIL, BSQ, Landsat, JPEG2000, DTED, NITF, ECW, HDF4, Hdf-Eos...
 - Images: tif, png, jpeg, gif...
 - Oracle Georaster and ArcSDE Raster
- Transactional WFS API
- OGC Filter Builder
- Render your data on-the-fly using the **local portrayal**.



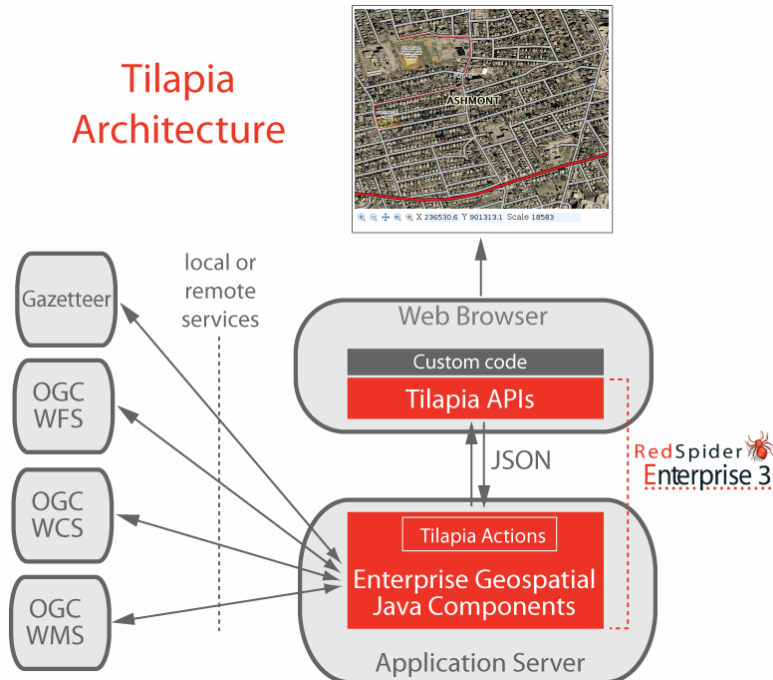
- Define the rendering styles using **custom rules**
 - properties rules
 - javascript rules
 - java rules
- Complete metadata API with support for **ISO1915** and **ISO19139**
- Complete Styled Layer Descriptor (**SLD**) API
- Read, write and manage **OGC contexts**
- Over **1000 coordinate transformation** support

Albers Conical, Equi Cylindrical, Lambert Azimuthal Equal Area, Lambert Conformal ConicMercator, Mollweide, Oblique Stereographic, Orthographic, Polar Stereographic, Polyconic, Transverse Mercator & UTM...



3.4.1 New Features

1. Tilapia Web toolkit



Tilapia is web toolkit, easy to integrate in existing web applications, that allows to build rich internet applications (RIA).

Tilapia supports:

- **OGC data services** support (WMS, WFS, WFS-T, WCS, gazetteer)
- Load & save maps to WMC context files
- Map navigation (pan, zoom...)
- Layer management (ordering, configuration...)
- Real time modification of **layer transparency**
- Geographic objects inspection and edition
- Complex **geometry edition** (WFS-T)
- Very fast GUI response thanks to browser-side processing (**AJAX**)
- Panels and components **drag & drop**

Tilapia is available in β in this release.

2. SLD API

Create, modify, read and write SLD rules with the help of the new SLD API. This API is based on the SLD 1.0 OGC specification. Resulting rules will enable the styling of feature and coverage data, using for example, RedSpider Enterprise local portrayal.

3. Upgraded APIs and documentation:

The following APIs have been upgraded to better fit the developer needs and fasten the applications implementation:

- Web Feature Service API
- Web Map Service API
- Image Archive Service APIs
- Portrayal rules APIs
- Security APIs
- IO/NET/LOG APIs
- Metadata APIs (new ISO 19139 reader/writer)

Documentation has been upgraded, and new samples added to enable quick-start developments.