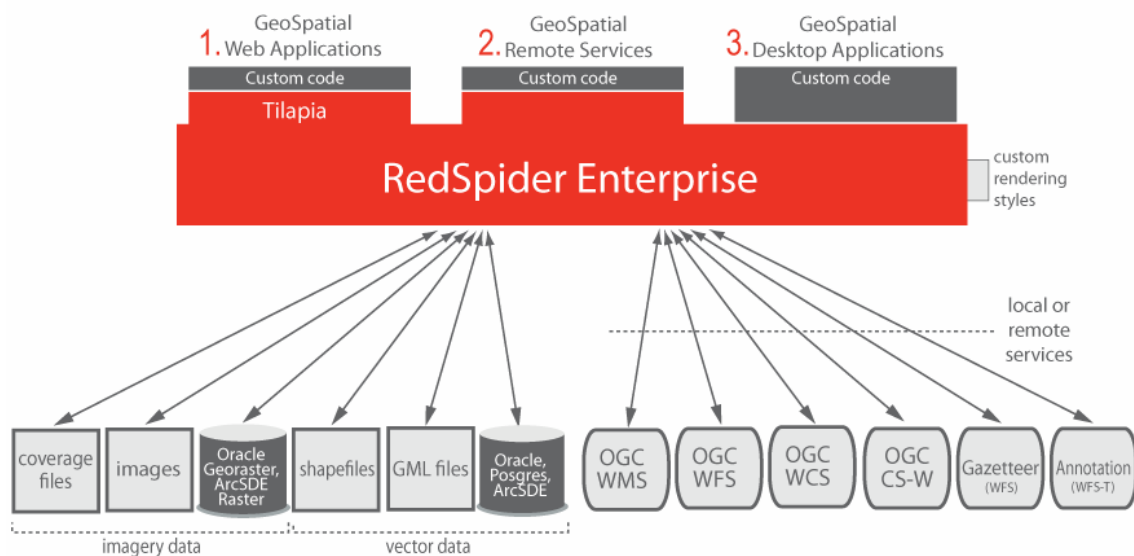


Leica Geosystems RedSpider Enterprise 3.5.2 Release Notes

Grâce-Hollogne, Belgium

January 15, 2008

Build Custom Geospatial Applications



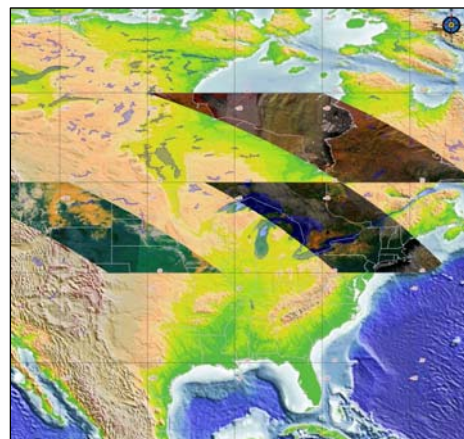
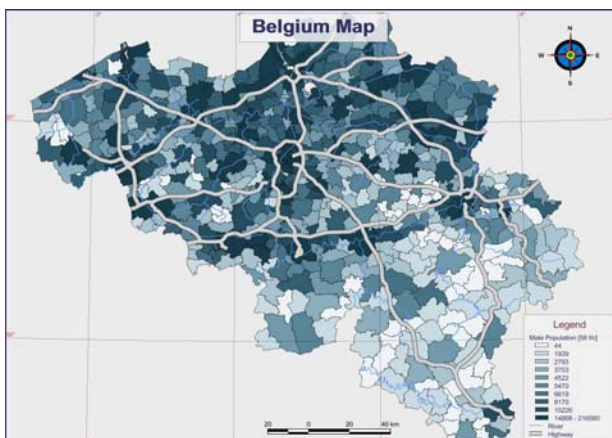
RedSpider Enterprise 3.5 is a full enterprise geospatial stack that can be used to build the following types of applications:

- **Geospatial Web Applications**
Build rich internet applications (RIA) with the help of the web toolkit.
- **Geospatial Remote Services**
Implement custom remote services and expose them using Java EE, RMI, or any desired protocol.
- **Geospatial Desktop Applications**
Build Swing/SWT desktop applications.

Leica Geosystems RedSpider Enterprise 3.5.2 Release Notes

Main RedSpider Enterprise features:

- **OGC services access**, including:
 - Web Map Services (WMS)
 - Web Feature Services (WFS)
 - Web Coverage Services (WCS)
 - Catalogue Web Services (CS-W)
 - Gazetteer (WFS)
 - Annotation Services (WFS-T)
 - Open Location Services (OLS)
- Transparent support for multiple **vector and imagery data** formats:
 - GML files (GML2 and GML3), ESRI Shapefiles
 - Oracle, PostGIS and ArcSDE
 - Coverage files: Geotiff, DEM, BIL, BSQ, Landsat, JPEG2000, DTED, NITF, ECW, HDF4, Hdf-Eos...
 - Images: tif, png, jpeg, bmp, gif...
 - Oracle Georaster and ArcSDE Raster
- Access your data using the **Web Toolkit!** Use the web toolkit to access OGC data services using a web browser. The toolkit uses the AJAX technology to give you the fast response times that give a smooth user experience. It provides the following features:
 - Complete map layer management with a navigation bar, layer list, overview map, Web Map Context (WMC), styling, ...;
 - **Editing of feature properties and geometries** (via WFS-T);
 - Portlet (JSR168) support;
 - Add **GML/Shapefile data to an existing map**;
 - Build and use OGC filters;
 - Support for map legends;
 - Complete developer guide.
- Transactional WFS API and full OGC Filter support
- Render your data on-the-fly using the **local portrayal**.





Leica Geosystems RedSpider Enterprise 3.5.2 Release Notes

- Define the rendering styles using **custom rules** in Java, JavaScript, or using a simple property file.
- Complete metadata API with support for **ISO19115** and **ISO19139**
- Complete Styled Layer Descriptor (**SLD**) API
- Read, write, and manage **OGC contexts**
- Support of the *ant* and *maven* build tools
- Support for over **1000 coordinate transformations** (Albers Conical, Equi Cylindrical, Lambert Azimuthal, Equal Area, Lambert Conformal, Conic Mercator, Mollweide, Oblique Stereographic, Orthographic, Polar Stereographic, Polyconic, Transverse Mercator & UTM, etc.)

Leica Geosystems RedSpider Enterprise 3.5.2 Release Notes

Version 3.5.2: New Features

The 3.5.2 release is mainly aimed at stability and bug fixing.

1. Java API improvements

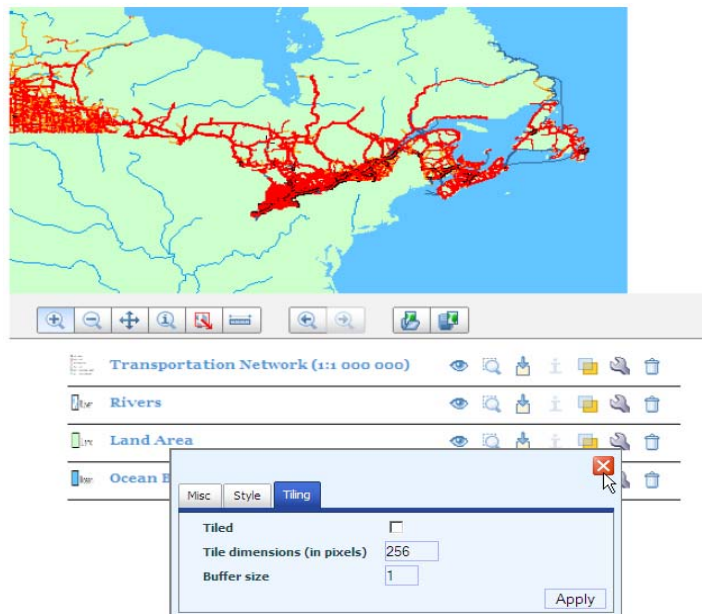
The API has been enhanced and is now more powerful and easier to use:

- The credentials associated with a secure service can be stored in a Web Map Context (WMC).
- Several **security-related utilities** have been added;
- Many **bug fixes**.

2. Web toolkit

Major improvements include:

- User interface improvement: complete review of the map loading process, map loading progress bar, interactive zoom, etc.
- The toolkit can now access **secure services** (i.e. services that require an authentication);
- **Download data management**: save a copy of the features contained in selected WFS layers. The data can be stored in a GML or Shape file.
- **Some samples** have been added.



Contact:

Stéphane NICOLL – RedSpider Enterprise Product Manager
Leica Geosystems Geospatial Imaging | IONIC Software
Rue de Wallonie 18 | 4460 Grâce-Hollogne | Belgium
Tel: +32 4 364 03 64 | Fax: +32 4 253 47 37
Stephane.Nicoll@gi.leica-geosystems.com
<http://gi.leica-geosystems.com> | <http://www.ionicsoft.com>