

What's New

ERDAS Web 3.4.2 Service Pack 1

New in ERDAS Web 3.4.2 Service Pack 1

More GDAL Raster Formats

Support of more raster formats of the GDAL library (ERS1, ERS2, radarsat1, etc.).

Support of CADRG and GRIB

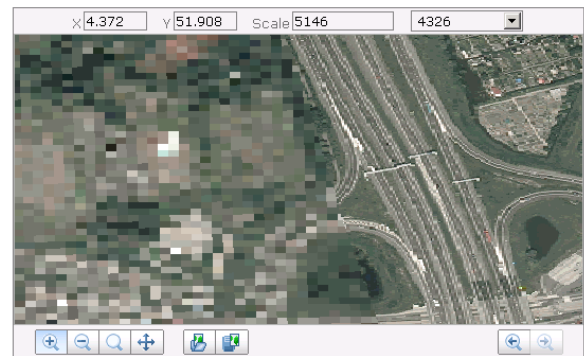
A Beta add-on to the GDAL library is available with Service Pack 1, offering support of two additional raster formats: CADRG (Defense) and GRIB (meteorological and oceanographic information). Contact your Services team for more info on how to install it.

Masking Capability

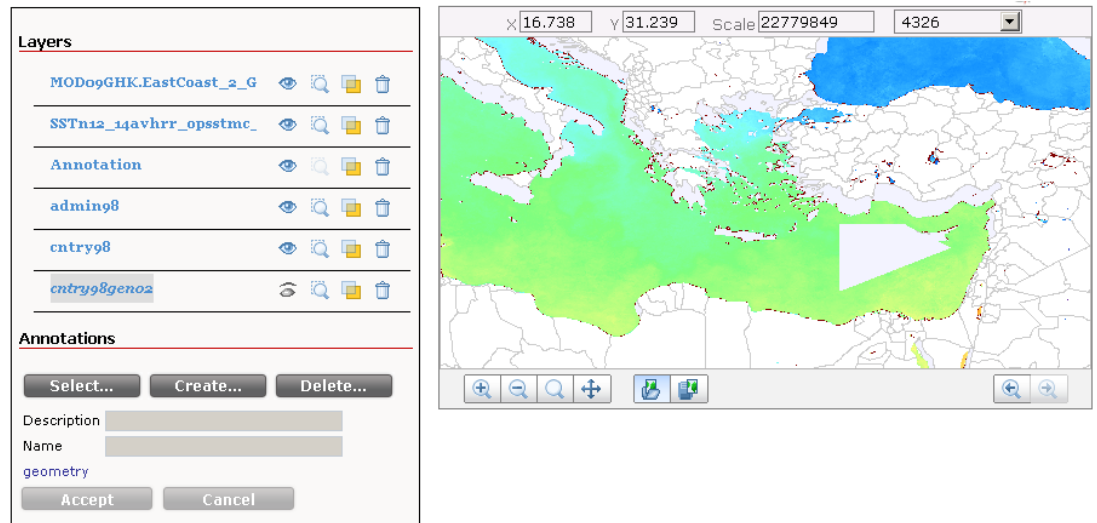
The WMS interface offers a masking capability, for improved confidentiality (prevent visualization of some zones) and for easier functional focus (reduce the visualization to the relevant zones only). The mask is applicable to imagery and to vector data. It can be applied either globally, or per role, depending on user authentication.

The shape of the mask is defined by polygons, served by a WFS. The mask can affect the visualization by making the zone of the map transparent, blurred, or opacified with color.

Note: The masking capability is currently only available through the WMS interface. The vector data clipping through the WFS interface is not implemented in this Service Pack. The WFS interface can still be disabled for consistent security purpose.



Masking a map by blurring some zones



Masking a map by making some zones transparent

Fixes and Patches

See details in the release notes included in the Service Pack or check out the helpdesk extranet.